



GAT MONTHLY MEMBERSHIP PROGRESS REPORT

Results as of: 6/30/2022

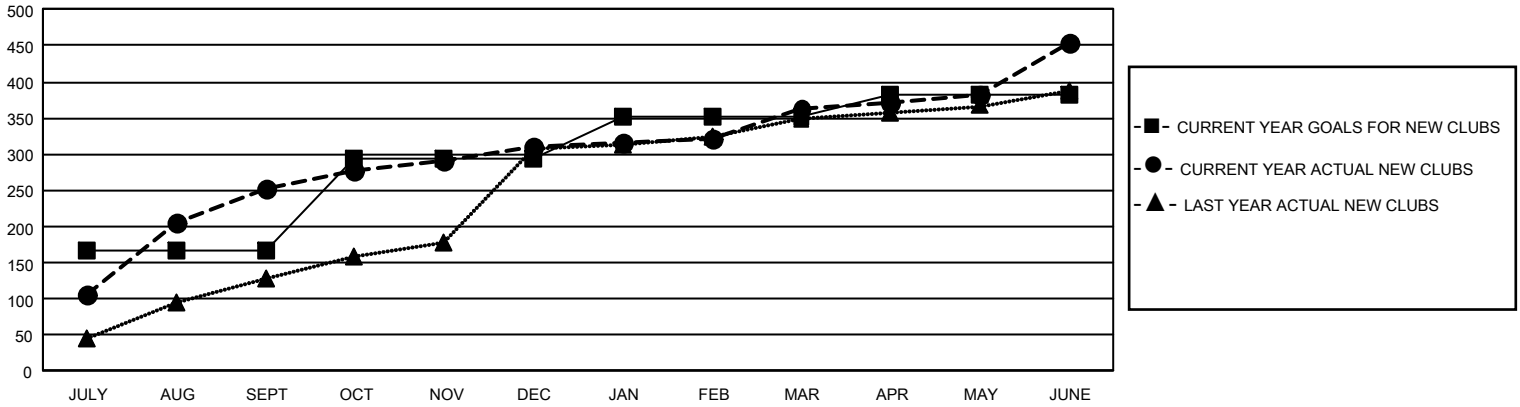
GMT Constitutional Area 6, Group D

REPORT DOES NOT INCLUDE CLUBS IN UNDISTRICTED AREAS.

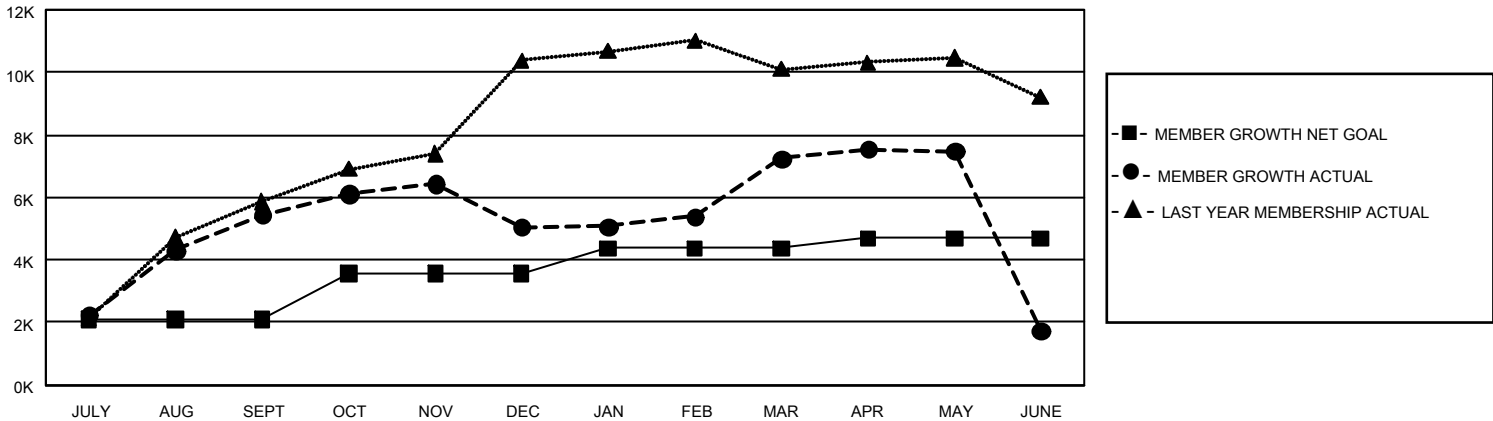
| Clubs | | | |
|-----------------------|---------------|-----------|---------------|
| RESULTS FOR 2021-2022 | | | |
| QUARTER | NEW CLUB GOAL | NEW CLUBS | DROPPED CLUBS |
| JULY/AUG/SEPT | 498 | 252 | 36 |
| OCT/NOV/DEC | 381 | 59 | 29 |
| JAN/FEB/MAR | 180 | 51 | 14 |
| APR/MAY/JUNE | 90 | 93 | 97 |

| Members | | | |
|-----------------------|------------------------|----------------------|--|
| RESULTS FOR 2021-2022 | | | |
| QUARTER | MEMBER GROWTH NET GOAL | MEMBER GROWTH ACTUAL | DROPPED MEMBERS ACTUAL (including transfers) |
| JULY/AUG/SEPT | 2087 | 7,566 | 2,061 |
| OCT/NOV/DEC | 1487 | 2,318 | 2,652 |
| JAN/FEB/MAR | 800 | 3,225 | 937 |
| APR/MAY/JUNE | 320 | 4,717 | 10,024 |

GOALS AND ACTUAL NEW CLUBS CUMULATIVE



GOALS AND ACTUAL MEMBERS CUMULATIVE



| | | | |
|--|---|--|--|
| DROPPED CLUBS: 176 | 1,421 CLUBS OF 2,096 ADDED 1 OR MORE NEW MEMBERS | <u>GENDER DISTRIBUTION</u> | |
| | | MALE 30,068 (70.19%) FEMALE 12,762 (29.79%) NON BINARY 0 (0.00%) PREFER NOT TO ANSWER 9 (0.02%) | |
| <u>DROPPED MEMBERS</u> | | CLICK HERE FOR CUMULATIVE MEMBERSHIP DATA | TOTAL FAMILY UNIT MEMBERS 35,287 |
| DECEASED 51 CLUB CANCELLED 3,453 OTHER 12,171 TOTAL 15,675 | | | FAMILY MEMBERS PAYING HALF DUES 24,512 |